

ARCHITECTS IN GREECE

1+ THESSALONIKI
FIRMS+PROJECTS



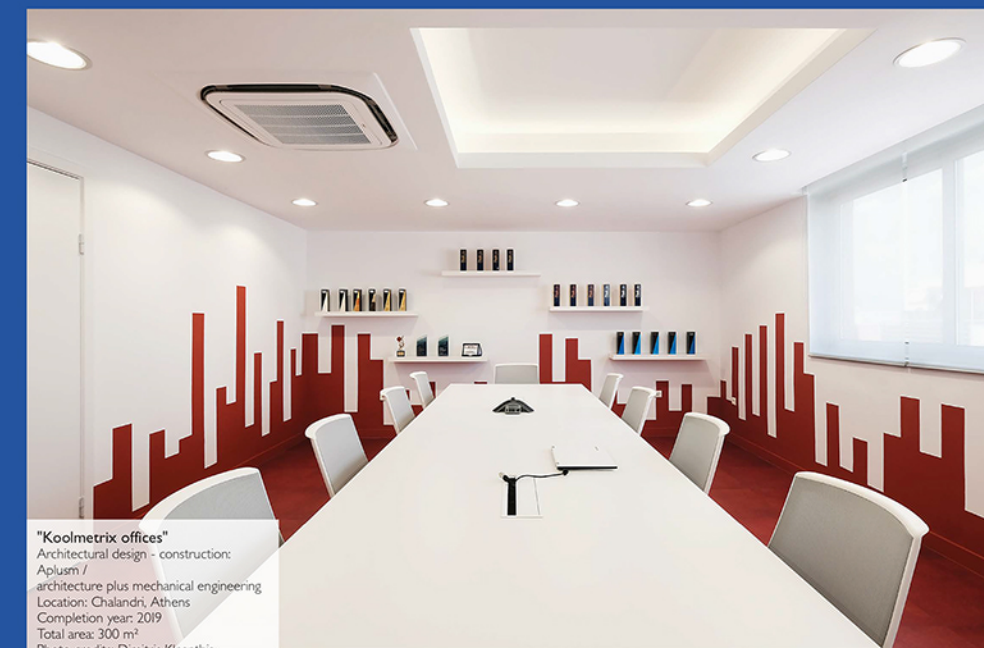
aplusm



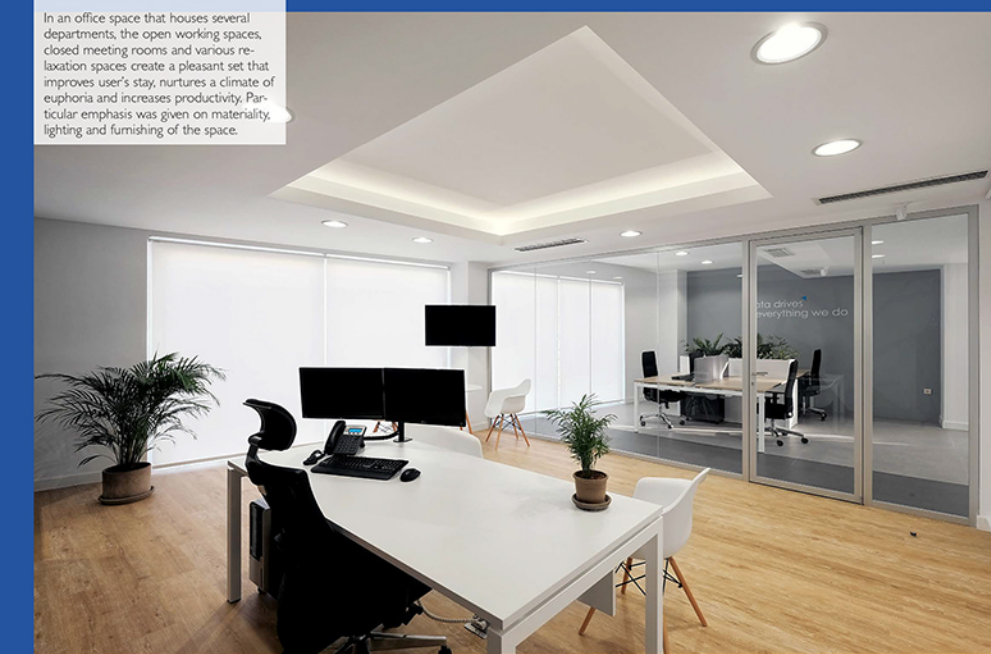
Το γραφείο δημιουργήθηκε από τους Νικόλα Πλαστήρα, Ηρώ Ραπτάκη και Γιώργο Κλέπικο το 2015 με έδρα τη Θεσσαλονίκη και το 2016 επεκτάθηκε στην πόλη της Αθήνας. Παρέχουμε υπηρεσίες μελέτης, επίβλεψης και κατασκευής αρχιτεκτονικών και μηχανολογικών έργων. Ιδιαίτερη έμφαση δίνεται στον τομέα της αισθητικής της λειτουργικότητας, καθώς και στη χρήση νέων τεχνολογιών στο σκελετό μας. Στόχος μας είναι να προσφέρουμε στον πελάτη λύσεις, που ανταποκρίνονται στις απαιτήσεις του και κάνουν την καθημερινότητά του ευχάριστη.

The office was founded by Nikolas Plastiras, Iro Raptaki and George Klepikos in Thessaloniki in 2015 and in the following year it branched out in the city of Athens. We provide design services, supervision and construction of architectural and mechanical engineering projects. Particular emphasis is given in aesthetics, functionality and in the use of new technologies to our design. Our goal is to offer our customers solutions that meet their requirements and make their everyday life pleasant.

www.aplusm.gr / T +30 230 26725

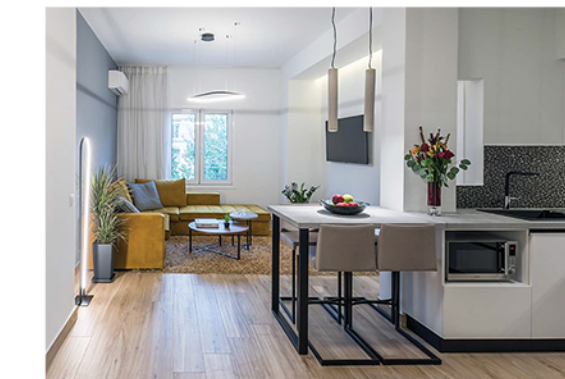


"Koolmetrix offices"
Architectural design - construction:
Aplusm /
architecture plus mechanical engineering
Location: Chalandri, Athens
Completion year: 2019
Total area: 300 m²
Photo credits: Dimitris Kleonthis

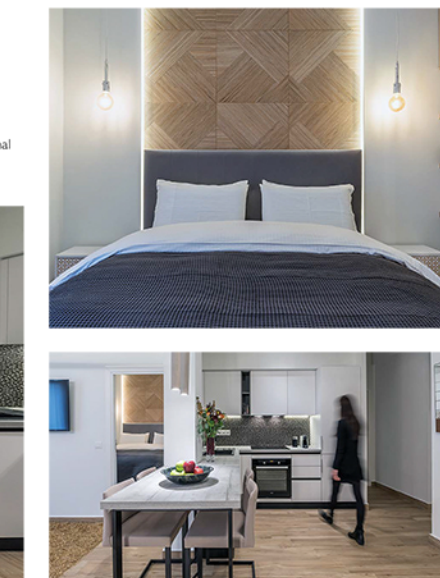


In an office space that houses several departments, the open working spaces, closed meeting rooms and various relaxation spaces create a pleasant set that improves user's stay, nurtures a climate of euphoria and increases productivity. Particular emphasis was given on materiality, lighting and furnishing of the space.

Apartment renovation (Airbnb)
Architectural design - construction: Aplusm / architecture plus mechanical engineering
Lighting design: Luminart Antoniadis
Location: Kalamaria, Athens
Completion year: 2018
Total area: 65 m²
Photo credits: George Sfakianakis



The design's main objective for this apartment of 65 m² was the reformation of both functional structures (new kitchen and bathroom locations) and the spaces' aesthetics (bright, modern materials), in order to meet the modern needs of the new user.



"Platanakia" Natura renovation
Architectural design - construction: Aplusm / architecture plus mechanical engineering
Location: Panorama, Thessaloniki
Completion year: 2019
Total area: 2.000 m²
Photo credits: Kim Powell

The central square acts as a starting point and references the typical square of a greek village. Around it a restaurant, redesigned with earthy materials, soft lighting and indoor plants, a playground equipped with modern toys and newbuilt bridges that allow the visitor to see the artificial lakes form the whole set.



"Nutricia" offices renovation
Architectural design: Aplusm /
architecture plus mechanical engineering
Location: Kifisia, Athens
Design year: 2020
Total area: 1.500 m²

The project regards the redesign of "Nutricia's" central offices. The new reception area, the main meeting room and the rest of the multipurpose spaces have been redesigned and enriched with new materials, vinyl floors, wall coverings, green walls, sound absorbing elements and vivid colors.

"Allegro - New Horizons" renovation
Architectural design - construction:
Aplusm /
architecture plus mechanical engineering
Lighting design: Luminart Antoniadis
Location: Building M2, Concert Hall, Thessaloniki
Completion year: 2017
Photo credits: John Simitopoulos

The project is located at the fifth level of Thessaloniki's Concert Hall (building M2). The building's geometrical simplicity, materiality and unobstructed views of the sea were key points of the design concept, the basic principles of which are the linearity and strict simplicity.

